

System Monitoring Program (SMP) - Model Number CNI016N



Features:

- Max. 83,727 addresses configurable per SMP
- Max. 64 nodes available on network
- Max. 103 symbols available per SMP
- Group functionality same as fire alarm control panel
- Current event list
- Event log for up to 5000 events per SMP
- Analog value trend indication
- Sensor monitoring
- 4 system control switches
- Designed for Microsoft®Windows® XP, 2000, and NT English version

Description:

The SMP is software to be installed in a personal computer. By connecting to FACP network via System Interface Unit (SIU), the SMP provides the system with an ability to monitor the FACPs on network, displays events currently occurring, and controls systems.

The SMP consists of two modes: one is the Design Mode, and the other is the Run Mode. In the Design Mode, registered device symbols are arranged on floor plans that come from BMP files, and the arranged symbols are given their addresses that are corresponded to addresses in FACPs. Also, a node number and a group number are assigned for the SMP for its identification on the network.

In the Run Mode, when any event occurs in the group to which the SMP belongs, the corresponded device symbols arranged in the Design Mode start flashing for notification to operator. The device symbols are white under normal monitoring condition. The symbols are changed to magenta for pre-alarm condition, orange for supervisory condition, yellow for trouble condition, and red for alarm condition. Details of currently occurring events are also displayed on the screen. The details consist of event occurrence date/time, device classification, status, device message, address number, and zone number.

The SMP equips with four system control switch as same as FACPs', such as Acknowledge, Silence, Drill, and System Reset. Operations of these switches are effective based on the group configuration.

Other functions in Run Mode:

- Event log: An SMP is able to store up to 5000 events in its event log. The event log data can be saved as a file.
- Trend data display: Trend data of pre-registered analog detectors can be displayed in graph format.
- Sensor monitoring: Analog detectors' current values (smoke density or temperature) can be displayed.
- Zoom: Floor plans can be displayed in 100%, 150%, or 200%.
- Protection: A dedicated key protector is required for SMP operation.
- User log in and out: Dedicated passwords are required in the cases of Design Mode start and Run Mode end.
- Sound: Either wave or beep is selectable.
- Maintenance report: Analog detectors current statuses can be displayed.
- Print: Various information can be printed.

SMP specifications:

No.	Item	Specification
1	Solution	1024 x 768 or 1280 x 1024 dot
2	Max. configurable address no. per SMP	83,727 addresses
3	Max. configurable screen no. per SMP	241 screens
4	Max. register-able symbol no. per SMP	103 symbols
5	Max. configurable symbol no. per screen	640 symbols
6	Event log capacity	5000 events
7	Max. number of node on network	64 nodes

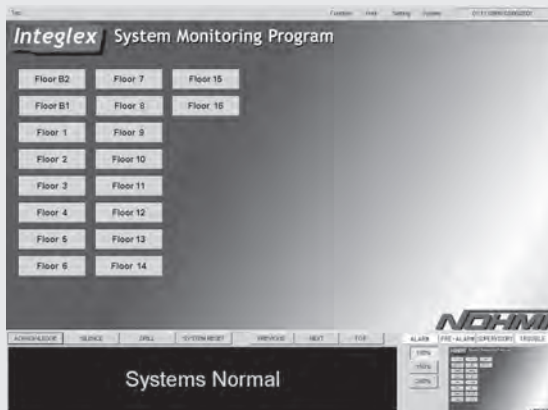
Required PC specifications:

No.	Item	Specification
1	PC hardware	<ul style="list-style-type: none"> • Processor class: Intel®Pentium II/III 200MHz or above • HDD space: More than 2G (including OS) • Memory: More than 128M • Media format: CD-ROM • Audio device: Sound card • Port: COM port and parallel port • Audio output: Speaker
2	Operating system	Microsoft®Windows®XP, 2000, or NT English version
3	Graphic	XGA: 1024 x 768, high color (16bit) or SXGA: 1280 x 1024, high color (16bit)

Ordering information:

- Model no. CN1016N

Screen information:



Top screen



Floor plan under alarm condition

No.	Date / Time	Classification	Status	Driving Message	Address	Zone	Group No.	FACP Name
0001	08:42:00PM 03/07/2001		SYSTEM RESET		N64		01	SMP
0002	08:42:33PM 03/07/2001	Supervisory	True/line	IF Tamper Switch	N01-1012	2005	01	FACP No.01
0003	08:42:40PM 03/07/2001		ACKNOWLEDGE		N64		01	SMP
0004	08:42:30PM 03/07/2001	Control Output	Active	IF Fire Door	N01-1104	2001	01	FACP No.01
0005	08:42:30PM 03/07/2001	Stalker Circuit	Active	IF Fire Door	N01-1102	2001	01	FACP No.01
0006	08:42:30PM 03/07/2001	Speaker Circuit	Active	IF Fire Door	N01-1101	2001	01	FACP No.01
0007	08:42:30PM 03/07/2001	Speaker Circuit	Active	IF Fire Door	N01-1101	2001	01	FACP No.01
0008	08:42:29PM 03/07/2001	Supervisory	Active	IF Tamper Switch	N01-1012	2005	01	FACP No.01
0009	08:42:29PM 03/07/2001	Alarmable	Alarm on	IF Fire Alarm	N01-1005	2004	01	FACP No.01
0010	08:42:29PM 03/07/2001	Alarmable	Alarm on	IF Fire Alarm	N01-1004	2003	01	FACP No.01
0011	08:42:29PM 03/07/2001	Alarmable	Alarm on	IF Fire Alarm	N01-1004	2003	01	FACP No.01
0012	08:42:29PM 03/07/2001	Alarmable	Alarm on	IF Fire Alarm	N01-1004	2003	01	FACP No.01
0013	08:42:29PM 03/07/2001	Alarmable	Alarm on	IF Fire Alarm	N01-1003	2002	01	FACP No.01
0014	08:42:29PM 03/07/2001	Alarmable	Alarm on	IF Fire Alarm	N01-1002	2002	01	FACP No.01
0015	08:42:29PM 03/07/2001	Alarmable	Alarm on	IF Fire Alarm	N01-1001	2001	01	FACP No.01
0016	08:42:29PM 03/07/2001	Alarmable	Alarm on	IF Fire Alarm	N01-1002	2001	01	FACP No.01
0017	08:42:29PM 03/07/2001	Alarmable	Alarm on	IF Fire Alarm	N01-1001	2001	01	FACP No.01
0018	08:42:29PM 03/07/2001	Alarmable	Alarm on	IF Fire Alarm	N01-1001	2001	01	FACP No.01
0019	08:42:29PM 03/07/2001	Alarmable	Alarm on	IF Fire Alarm	N01-1001	2001	01	FACP No.01
0020	08:42:16PM 03/07/2001		SYSTEM RESET		N64		01	SMP
0021	08:42:16PM 03/07/2001		ACKNOWLEDGE		N64		01	SMP
0022	08:42:11PM 03/07/2001	Control Output	Active	IF Fire Door	N01-1104	2001	01	FACP No.01
0023	08:42:11PM 03/07/2001	Stalker Circuit	Active	IF Fire Door	N01-1102	2001	01	FACP No.01
0024	08:42:11PM 03/07/2001	Speaker Circuit	Active	IF Fire Door	N01-1101	2001	01	FACP No.01
0025	08:42:07PM 03/07/2001		DELL ON		N64		01	SMP
0026	08:42:07PM 03/07/2001		SILENCE OFF		N64		01	SMP
0027	08:42:06PM 03/07/2001	Control Output	Inactive	IF Fire Door	N01-1104	2001	01	FACP No.01
0028	08:42:06PM 03/07/2001	Stalker Circuit	Inactive	IF Fire Door	N01-1102	2001	01	FACP No.01
0029	08:42:06PM 03/07/2001	Speaker Circuit	Inactive	IF Fire Door	N01-1101	2001	01	FACP No.01
0030	08:42:00PM 03/07/2001		SILENCE ON		N64		01	SMP
0031	08:41:54PM 03/07/2001		ACKNOWLEDGE		N64		01	SMP
0032	08:41:54PM 03/07/2001	Supervisory	Active	IF Tamper Switch	N01-1012	2005	01	FACP No.01
0033	08:41:37PM 03/07/2001	Alarmable	Alarm on	IF Fire Alarm	N01-1005	2004	01	FACP No.01
0034	08:41:37PM 03/07/2001	Alarmable	Alarm on	IF Fire Alarm	N01-1004	2003	01	FACP No.01
0035	08:41:37PM 03/07/2001	Alarmable	Alarm on	IF Fire Alarm	N01-1004	2003	01	FACP No.01
0036	08:41:37PM 03/07/2001	Alarmable	Alarm on	IF Fire Alarm	N01-1004	2003	01	FACP No.01
0037	08:41:37PM 03/07/2001	Alarmable	Alarm on	IF Fire Alarm	N01-1004	2003	01	FACP No.01
0038	08:41:37PM 03/07/2001	Alarmable	Alarm on	IF Fire Alarm	N01-1003	2002	01	FACP No.01
0039	08:41:37PM 03/07/2001	Alarmable	Alarm on	IF Fire Alarm	N01-1002	2002	01	FACP No.01
0040	08:41:37PM 03/07/2001	Alarmable	Alarm on	IF Fire Alarm	N01-1001	2001	01	FACP No.01
0041	08:40:36PM 03/07/2001		ACKNOWLEDGE		N64		01	SMP
0042	08:40:36PM 03/07/2001	Control Output	Active	IF Fire Door	N01-1104	2001	01	FACP No.01

Event log screen

Note:

- These instructions do not purport to cover all the details or variations in the equipment described, nor provide for every possible contingency to be met in connection with installation, operation and maintenance.
- Specifications are subject to change without notice. Contact Nohmi before relying on above specifications.
- Actual performance is based on proper application of the product by a qualified professional.
- Should further information be desired or should particular problems arise, which are not covered sufficiently for the purchaser's purposes, the matter should be referred to Nohmi or a distributor in your region.

NOHMI
NOHMI BOSAI LTD.

- Head Office: 4-7-3 Kudan-Minami, Chiyoda-ku, Tokyo 102-8277, Japan
 - Phone:(81)3-3265-0231
 - F A X:(81)3-3265-5348
- URL <http://www.nohmi.co.jp/english/>

Contact