



N3060
N765

Integlex ***Multicrest*** TM
fire alarm system

**Intelligent Addressable
Fire Alarm System**



“Nohmi Quality” you can trust.

From the viewpoint of social safety and industrial risk management, there is an increasing demand for improvements in the quality of fire prevention. Although it is obvious that safety is as important as air, people are only now re-evaluating safety and appreciating its importance.

It is already difficult to ensure safety even when a building is viewed from the simple container concept.

People now have diverse lifestyles so fire protection systems peculiar to the building must be constructed. As a result, we must understand both how buildings are used and the lifestyles of the occupants.

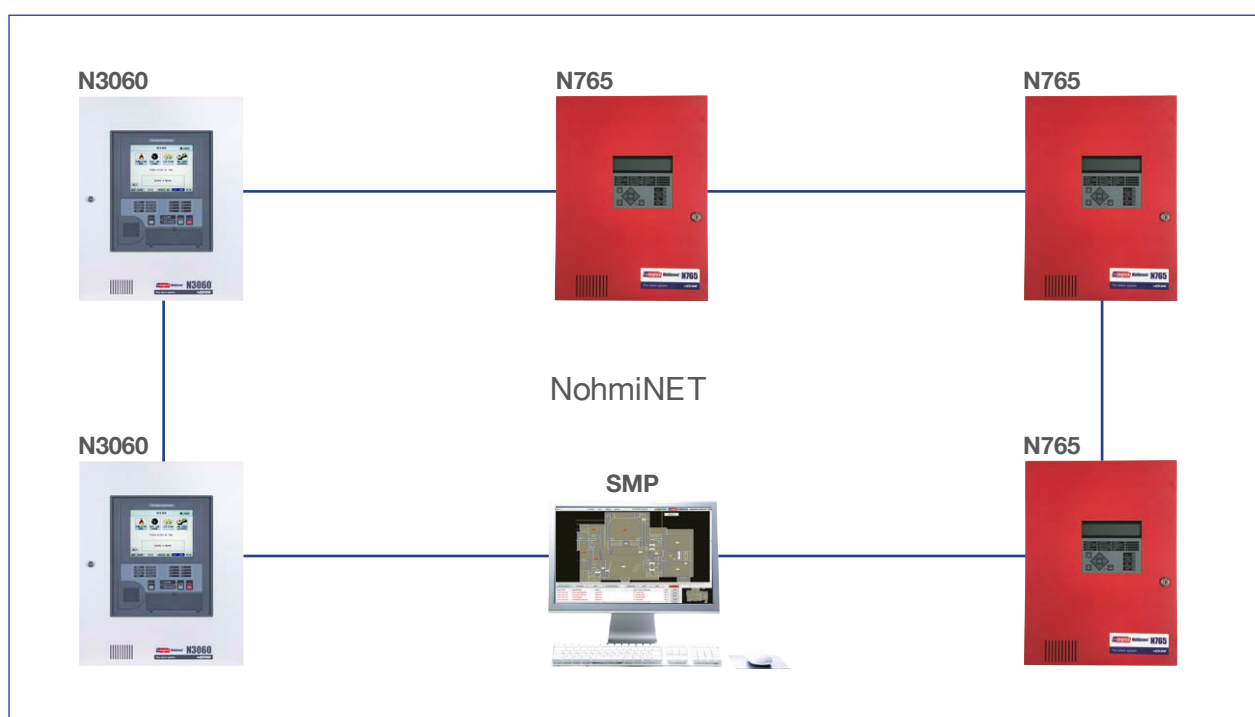
At the same time, unique, sophisticated fire protection technology is required to also take into account the construction and function of buildings as well as innovations in external cladding and internal finishing materials.

Take a look at our fire alarm systems. Nohmi's state-of-the-art technology features ingenious design combined with features that make our customers' lives safer and more comfortable.

Nohmi's worldwide corporate brand identity, NOHMI, is based on this concept of providing each customer with the most suitable fire protection system for their needs by making the most of our advanced know-how gained over many years.

Benefits of the Nohmi Engineered Systems

The Nohmi's Integlex Multicrest series will help you a flexible design and configuration on various building applications from small to large size projects. The Integlex Multicrest series control panels can be networked and the common devices such as detectors and modules can be shared. This helps you when expanding the buildings or changing layouts.



N3060



The Integlex Multicrest N3060 is an expandable and intelligent addressable fire alarm system. The N3060 Fire Alarm Control Panel employs a TFT 10.4 inch large color touch screen interface which provides faster & easier system operation and displays a range of comprehensive system information.

The N3060 FACP is capable of having a maximum of 12 loops that supports up to 3,060 addressable devices. Depending on the application conditions, each loop can be selected for either 127 addresses or 255 addresses.

With its versatility and expandability, the N3060 system is suitable for a range of medium to large-sized applications.



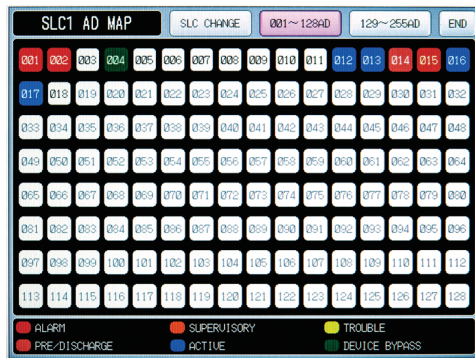
Easy to see various and comprehensive information on LCD

Details of categorized event information such as number of total events, classification, outbreak time, event type, event location, device message are displayed on the color LCD, so that the operator can immediately obtain comprehensive information.

1	1st ALARM information	<div>ALARM(1st) TOTAL : 0002</div> <div>Analog Smk Detector13:53</div> <div>AlarmF2 01-01-001</div> <div>Electrical Room No. 1</div>	<div>ALARM LOGOFF</div> <div>Smk/Fixed Detector 13:54</div> <div>AlarmF2 01-01-002</div> <div>Electrical Room No. 2</div>	ALARM information After 1st alarm	2
3	SUPERVISORY information	<div>SUPERVISORY TOTAL : 0001</div> <div>Water Level Low 12:55</div> <div>Active 01-01-005</div> <div>Sprinkler Water Tank</div>	<div>DEVICE TOTAL : 0001</div> <div>Horn Circuit 13:54</div> <div>Active 01-02-007</div> <div>Electrical Room</div>	DEVICE information	4
5	PRE-DISCHARGE & DISCHARGE information	<div>P/DISCHARGE TOTAL : 0001</div> <div>Release Circuit 13:54</div> <div>Discharge 01-00-006</div> <div>Electrical Room NN100</div>	<div>BYPASS TOTAL : 0001</div> <div>Photo Smk Detector 13:55</div> <div>Dvc Bypass 01-01-003</div> <div>Electrical Room No. 3</div>	BYPASS information	6
7	DEVICE TROUBLE information	<div>DEVICE TBL TOTAL : 0002</div> <div>Bell Circuit 12:54</div> <div>Device Fault01-00-005</div> <div>B1F Corridor West</div>	<div>SYSTEM TBL TOTAL : 0002</div> <div>System Trouble On 12:54</div> <div>SLC 3 Trouble</div> <div>Node01</div>	SYSTEM TROUBLE information	8
		<div>MODE CHANGE GUIDE ADDRESS MAP FACP LOGON 14:02</div>			

Simple mode display

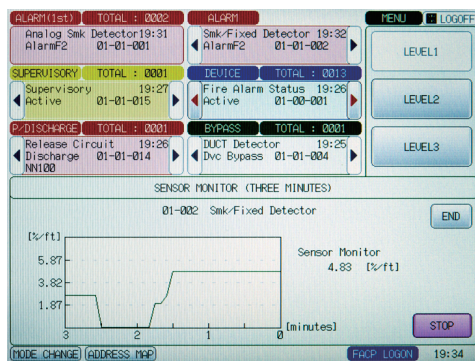
Address map - Display of collective address statuses



Address map display

The Address Map of N3060 allows the panel operator to see the statuses of 128 addresses at a glance. When the status of an address is changed, the color of the address icon changes to show the status.

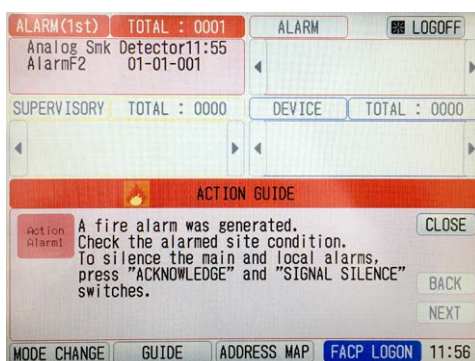
Sensor monitor - Graphical detector sensing level



Sensor monitor display

The Sensor Monitor graphically displays the sensed smoke level or heat level of the selected analog detector for the past 3 minutes or the past one week. This function facilitates checking of the sensing level of a particular detector.

Action guidance messages



Sensor monitor display

The action guidance messages assist operators to take appropriate action when the event occur. The guidance messages are preprogramed, but users can change them accordingly. This feature can prevent panic, especially in the event of a fire.

N765



The Integlex Multicrest N765 is an expandable and intelligent addressable fire alarm system.

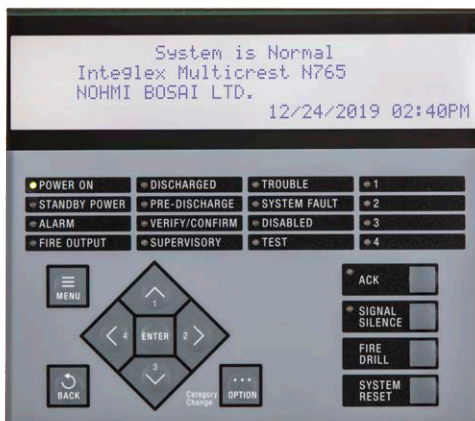
The N765 Fire Alarm Control Panel is designed for small to medium size applications. The N765 FACP is suitable for the gas suppression control with a simple configuration tool and module.

The N765 is capable of having a maximum of 3 loops that support up to 765 addressable devices. Depending on the applications, each loop can be selected for either 127 addresses or 255 addresses.

The N765 is designed to fit small space. The N765 has a single size enclosure and all of the optional boards, such as an additional SLC board, network interface unit, and etc. can be stored in it.

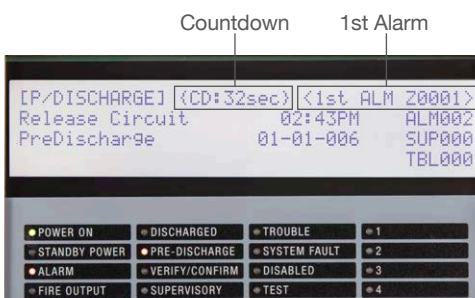


User-friendly Interface



The N765 is equipped with a simple interface and a clear LCD screen to make easy operation possible. The Option button will allow you to change display categories and short cut the function.

Optimal Display



The first alarm and a subsequent alarm will be displayed at the same time because knowing of the fire occurrence is very important for firefighting. The countdown timer will also be displayed if it is programmed so that the operator understands the remaining time to gas discharge.

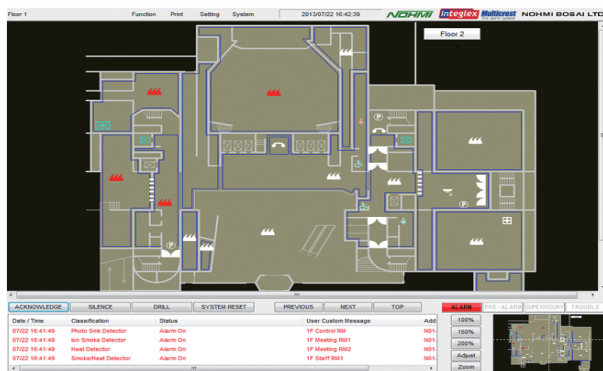
Common Features

Network capability



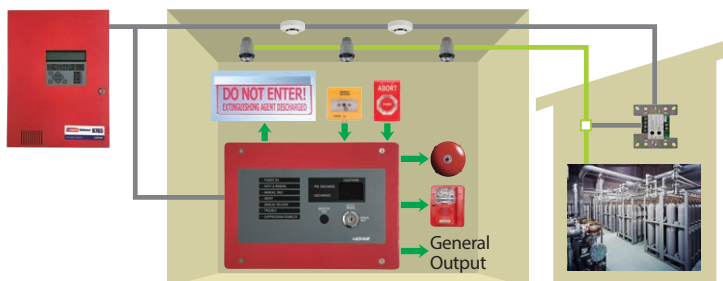
The Multicrest FACPs have the ability to create a Local Area Network of FACPs and PC-based System Monitoring Program. A maximum of 64 nodes can be networked to handle various types of applications.

Graphic Interface Application



The Windows-based graphic interface application offers the ability of monitoring system conditions of networked fire alarm systems. The system functional button, such as Acknowledge, Signal Silence, Fire Drill, and System Reset, is also available to control networked FACPs and SMPs.

Easy configuration for suppression control



The Multicrest FACPs also have the ability to control fire suppression systems. The Gas Suppression Control Unit (GSCU) helps easy configuration and cost reduction. Multiple modules used to be required to configure necessary devices to the gas suppression system, but one GSCU can eliminate those.

Common Features

No limitation of addressable device configuration per SLC

The addressable detectors and modules on an SLC can be configured in any combination as long as the total number is within the limit (127 or 255). This feature allows users to adjust the configuration of the fire alarm system to match future system changes and expansions.

Smoke detector dirty level check

Data Upload Time (Start) = Mar 09 2012, 11:38
Data Upload Time (End) = Mar 09 2012, 11:38

Address	Classification	Current Analog Value <%m>	Current Status	Current Dirty Level <%m>	Dirty Threshold <%m>
1001	Analog Smk Det_A 1F Room-1	0.0	Normal	0.2	4.4
1002	Analog Smk Det_A 1F Room-2	0.0	Normal	0.0	4.4
1003	Analog Smk Det_A 1F Room-3	0.0	Normal	0.0	4.4
1004	Analog Smk Det_A 1F Room-4	0.0	Normal	0.0	4.4
1005	Analog Smk Det_A 1F Room-5	0.0	Normal	0.4	4.4
1006	Analog Smk Det_A 1F Room-6	0.0	Normal	0.2	4.4
1007	Analog Smk Det_A 1F Room-7	0.0	Normal	0.6	4.4
1008	Analog Smk Det_A 1F Room-8	0.0	Normal	0.0	4.4
1009	Analog Smk Det_A 1F Room-9	0.0	Normal	0.0	4.4
1010	Analog Smk Det_A 1F Room-10	0.0	Normal	0.0	4.4
1011	Analog Smk Det_A 1F Room-1	0.0	Normal	0.4	4.4
1012	Analog Smk Det_A 2F Room-2	0.0	Normal	0.0	4.4
1013	Analog Smk Det_A 2F Room-3	0.0	Normal	0.8	4.4
1014	Analog Smk Det_A 2F Room-4	0.0	Normal	0.4	4.4

Smoke detectors may become dirty after years of installation, making them more prone to trigger false alarms. The Multicrest FACP's can store data on the dirt level of connected addressable smoke detectors, which can also be indicated on a Maintenance List. By checking the dirt levels on the Maintenance List, users can see which addressable smoke detectors require maintenance or replacement.

Walk Test Report

PCOP - [TestReport.rpt]

No.	Address	Classification	User Custom Message	Test Date	Test Time	Condition	Result
0001	N05-01-001	Photo Detector	Analog Smk Detector	18/07/2019	17:45:29	Alarm	Pass
0002	N05-01-002	Photo Detector	Analog Smk Detector	18/07/2019	17:45:37	Alarm	Pass
0003	N05-01-003	Photo Detector	Analog Smk Detector	18/07/2019	17:45:40	Alarm	Pass
0004	N05-01-004	Photo Detector	Analog Smk Detector	18/07/2019	17:47:26	Alarm	Pass
0005	N05-01-005	Photo/Heat Combination Det.	Smk/Fixed Detector	18/07/2019	17:48:40	Alarm	Pass
0006	N05-01-006	Photo/Heat Combination Det.	Smk/Fixed Detector	18/07/2019	17:45:40	Alarm	Pass
0007	N05-01-007	Photo/Heat Combination Det.	Smk/Fixed Detector	18/07/2019	17:45:40	Alarm	Pass
0008	N05-01-008	Photo/Heat Combination Det.	Smk/Fixed Detector	18/07/2019	17:45:40	Alarm	Pass

After the walk test, the N3060, N765 can create the walk test report so that the users can easily prepare the report to the authorities.

Disable for Maintenance

The N3060, N765 FACP is capable of cutting off all output devices/circuits except NAC devices at once from the menu option. This prevents unwanted activation of output devices during the maintenance or installation work.

Features comparison of N3060 and N765

Features	N3060	N765
Loop (SLC) number per system	Max. 12 loops	Max. 3 loops
Addressable device number per loop	127 or 255	127 or 255
Addressable device number per system	Max. 3,060	Max. 765
Free addressable device configuration per loop	Yes	Yes
LCD Display	10.4 inch color touch screen	160 characters (40 letters x 4 lines)
Anti-tamper protection	3 level passwords	3 level passwords
FACP network	Yes, 64 nodes	Yes, 64 nodes
AC input rated voltage and frequency	110 to 240, 50/60Hz	100 to 240, 50/60Hz
Battery capacity	12Ah to 65Ah	7Ah to 40Ah
NAC number, total current	4 NACs, 6.0A in total	2 NACs, 5.0A in total
Built-in NAC synchronization	Yes	Yes
NAC codes	Temporal 3, March Time, California, Continuous, 20 ppm to continuous, 1 sec on and 2 sec off (20 ppm)	Temporal 3, March Time, California, Continuous, 20 ppm to continuous, 1 sec on and 2 sec off (20 ppm)
Auxiliary power	1.0A at 24VDC	1.0A at 24VDC
Extra power supply unit in a enclosure	Yes, 1 no.	No
Dry output contact	3 nos.	3 nos.
Trouble output contact	1 no.	1 no.
Input Circuit	No	2 nos.
Remote annunciator number per system	Max. 30	Max. 30
RS-232C serial output	1 no.	1 no.
Event history buffer	4,000 events	4,000 events
Sensor monitor	Yes	Yes
Bypass / Disable	Yes	Yes
Alarm simulation	Yes	Yes
Auto program	Yes	Yes
Fire suppression system control	Yes	Yes
Pre-signal	Yes	Yes
Positive alarm sequence	Yes	Yes
Auto silence	Yes	Yes
Silence inhibit	Yes	Yes
Walk Test (standard and silent)	Yes	Yes
Walk Test Report	Yes	Yes
Config. data edit on LCD	Yes, partially	Yes, partially
Address map	Yes	No
Machine time (Component running time)	Yes	Yes
Configuration data creation	Windows-based application	Windows-based application
Degrade mode	Yes	Yes
Voice message	Yes	No
Smoke detector dirty level check	Yes	Yes
Action guidance	Yes	No
SD Card	No	Yes
Trouble Zone	Yes	Yes
Countdown Timer	Yes	Yes

Common Devices

Our wide range of Common Devices will fit your needs

Analog Addressable Detectors



Analog Photo Smoke
Detector
FDKU033-D



Analog Photo Smoke
Detector
FDKU033-D-X



Analog Fixed Heat
Detector
FDLU019-D-X



Analog Combi Heat
Detector (ROR/Fixed)
FDHU003-D-X

Bases



4-inch Base
FZBU013-2Z
FZBU013-4Z



Addressable Sounder Base
FZBU005-ASB



Isolator Base
FZBU005-AIB

Modules



Miniature Contact Module
FRRU004-MCM



Single Contact Module
FRRU004-SCM4



Dual Contact Module
FRRU004-DCM4



Twin Relay Module
FRRU004-TRM4



Monitored Output Module
FRRU004-MOM4



Conventional Initiating
Zone Module
FRRU004-CIZM4



Short Circuit Isolator
FQIU004-SCI



Analog Input Module
FRRU004-AIM



Gas Suppression
Control Unit
FRRU004-GSCU

Address Setting Unit



Address Setting Unit
FZAW004-P

Annunciators



LCD Type
Remote Annunciator
FIRU009-R-LCD



LED Type
Remote Annunciator
FIRU009-R-LED



LED Driver Module
PCA-N3060-LDM

Pull Stations



Single Action
Terminal Type



Dual Action
Terminal Type

Notification Appliances



Alarm Bell



Strobe with Horn

Graphic Interface Application



System Monitoring Program
CNI016N



System Interface Unit

Network Accessories



Network Interface Unit
PCA-2706XA NIU



Fiber-optic Interface
Module
PCA-2707XA FIM



Fiber-optic Interface
Module 2-A
PCA-N3060-FIM2-A



Fiber-optic Interface
Module 2-B
PCA-N3060-FIM2-B



NOTE

The information contained herein does not purport to cover all the details or variations of the equipment described, nor to provide for every possible contingency that may be met in connection with its installation, operation or maintenance.

Specifications are subject to change without notice. Contact Nohmi before relying on the information.

Actual performance is based on proper application of the product by a qualified professional.

Should further information be required or should particular concerns arise that are not covered sufficiently for the purchaser's purposes, the matter should be referred to Nohmi or your nearest distributor.

Distributed by :



Tel: +81-3-3265-0231 Fax: +81-3-3265-5348
<https://www.nohmi.co.jp/english/>

Head Office: 4-7-3 Kudan-Minami, Chiyoda-ku, Tokyo 102-8277, Japan

230630©-F-14101Y01